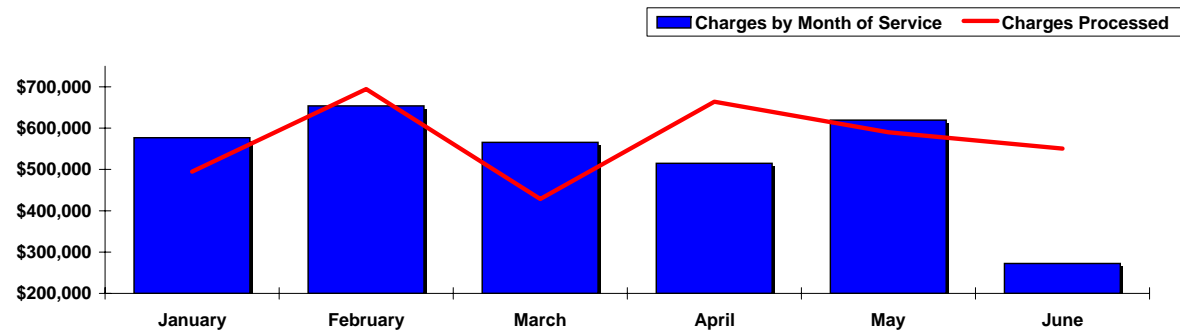


Monthly Summary - Charges

		January	February	March	April	May	June	
<u>Charges by Month of Service</u>								
Hospital & Referred	Current	\$576,846	\$653,962	\$565,446	\$514,734	\$619,578	\$272,405	
	Prior	467,424	588,903	578,988	517,822	585,878	530,475	
	Variance	109,422	65,059	(13,542)	(3,088)	33,700	N/A	\$191,551
		23%	11%	-2%	-1%	6%	N/A	6%
								(5 months)

		January	February	March	April	May	June	
<u>Charges Processed</u>								
	Hospital	290,947	356,055	209,210	313,044	288,679	245,010	Processing low in Nov. due to not receiving demographic info. until Dec.
	Referral	203,973	338,622	219,296	350,805	301,263	305,563	
	Total	\$494,920	\$694,677	\$428,506	\$663,849	\$589,942	\$550,573	



Operational Overview

through September 2003

	January	February	March	April	May	June	July	August	September	YTD Total
--	---------	----------	-------	-------	-----	------	------	--------	-----------	--------------

Receipts \$

Net Receipts 2003	207,012	188,000	208,867	237,080	222,146	217,465	228,180	212,706	272,363	1,993,819
Net Receipts 2002	241,485	189,592	240,269	220,706	219,876	217,955	231,165	185,577	212,669	1,959,294
<i>Variance</i>	<i>(34,473)</i>	<i>(1,592)</i>	<i>(31,402)</i>	16,374	2,270	<i>(490)</i>	<i>(2,985)</i>	27,129	59,694	34,525
<i>Variance Percent</i>	<i>-14%</i>	<i>-1%</i>	<i>-13%</i>	7%	1%	0%	<i>-1%</i>	15%	28%	2%

Accounts Receivable

Total A/R 2003	584,094	655,459	762,897	691,349	767,294	779,256	814,161	805,750	648,829
Total A/R 2002	512,779	609,977	651,751	698,777	749,453	707,304	548,488	713,167	615,062
<i>Variance</i>	71,315	45,482	111,146	<i>(7,428)</i>	17,841	71,952	265,673	92,583	33,767
A/R Over 90 Days 2003	47,538	50,472	48,215	61,873	91,847	112,338	110,490	105,995	98,876
A/R Over 90 Days 2002	64,098	58,129	63,114	79,954	79,881	63,910	65,953	60,032	74,311
<i>Variance</i>	<i>(16,560)</i>	<i>(7,657)</i>	<i>(14,899)</i>	<i>(18,081)</i>	11,966	48,428	44,537	45,963	24,565
% A/R Over 90 Days 2003	8%	8%	6%	9%	12%	14%	14%	13%	15%
% A/R Over 90 Days 2002	13%	10%	10%	11%	11%	9%	12%	8%	12%
Months in A/R : 2003	0.9	1.1	1.1	1.0	1.0	1.1	1.2	1.1	1.0
Months in A/R : 2002	0.9	1.1	1.0	1.2	1.2	1.2	0.9	1.2	1.0

Charges Pyramid



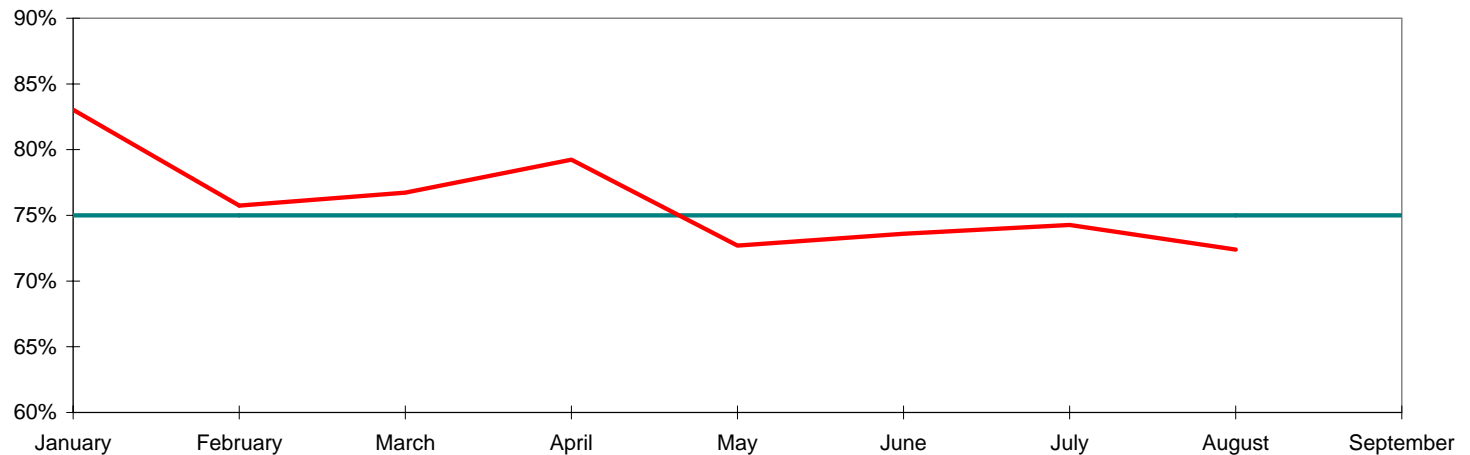
Month of Services

	January	February	March	April	May	June	July	August	September	Total
02/04/03	348,334									399,815
03/04/03	69,446	270,229								339,606
04/04/03	308	86,543	285,129							372,292
05/02/03	330	(121)	87,342	319,654						408,095
06/03/03	1,021	192	(343)	80,448	281,625					362,943
07/02/03	-	(23)	24	2,296	104,627	294,281				401,133
08/04/03	-	(36)	(821)	250	573	101,308	288,001			389,071
09/03/03	80	10	203	240	553	4,608	95,271	257,345		358,135
10/02/03	10	-	49	552	-	(388)	4,533	98,153	282,559	385,469
Per DOS Report per Biller	419,529	356,794	371,583	403,440	387,378	399,809	387,805	355,498	282,559	3,416,559

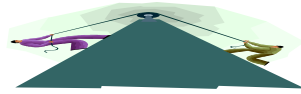
% of Current Charges Processed in that Month:

83% **76%** **77%** **79%** **73%** **74%** **74%** **72%**

HBP Goal = 75%



Cash Pyramid \$



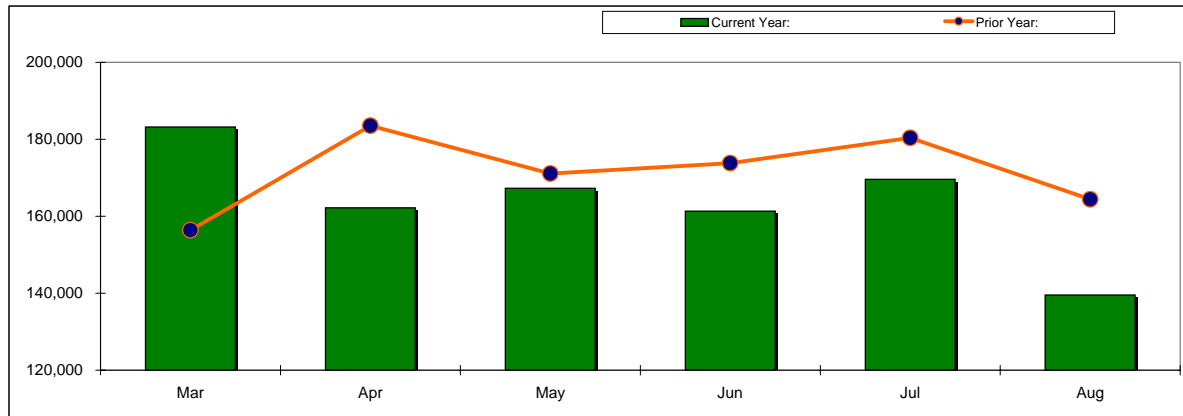
Month of Service

Month of Service:	January	February	March	April	May	June	July	August	Total by processing
Cash as of:									
02/04/03	19,059								19,059
03/04/03	78,452	12,543							90,995
04/04/03	38,019	78,110	17,980						134,109
05/02/03	7,159	19,493	71,216	22,691					120,559
06/03/03	3,381	4,594	31,105	73,623	9,820				122,523
07/02/03	1,919	4,569	9,951	32,153	86,343	15,880			150,815
08/04/03	1,143	1,812	1,927	5,560	19,650	73,291	5,013		108,396
09/03/03	924	1,888	993	4,183	7,172	25,816	78,445	11,513	130,934
Total Cash by DOS: →	150,056	123,009	133,172	138,210	122,985	114,987	83,458	11,513	877,390
Total Charges by DOS:	419,519	356,794	371,534	402,888	387,378	400,197	383,272	257,345	2,978,927
	36%	34%	36%	34%	32%	29%	22%	4%	

Total Cash Receipts \$

	Mar-03	Apr-03	May-03	Jun-03	Jul-03	Aug-03	6 Month Total
Total Net Receipts							
Current Year:							
Gross Receipts	157,006	184,132	184,240	174,521	182,487	165,480	1,047,866
Less Refunds	(643)	(589)	(13,140)	(704)	(2,095)	(1,079)	(18,250)
Net Receipts	156,363	183,543	171,099	173,816	180,393	164,401	1,029,615
Prior Year:							
Gross Receipts	185,306	164,220	168,465	162,159	173,326	141,640	995,116
Less Refunds	(2,106)	(2,020)	(1,188)	(832)	(3,732)	(2,112)	(11,992)
Net Receipts	183,200	162,199	167,277	161,326	169,594	139,528	983,124
Variance	(26,837)	21,344	3,823	12,490	10,799	24,873	46,491
	-15%	13%	2%	8%	6%	18%	5%

Source : CMI Postsum Reports



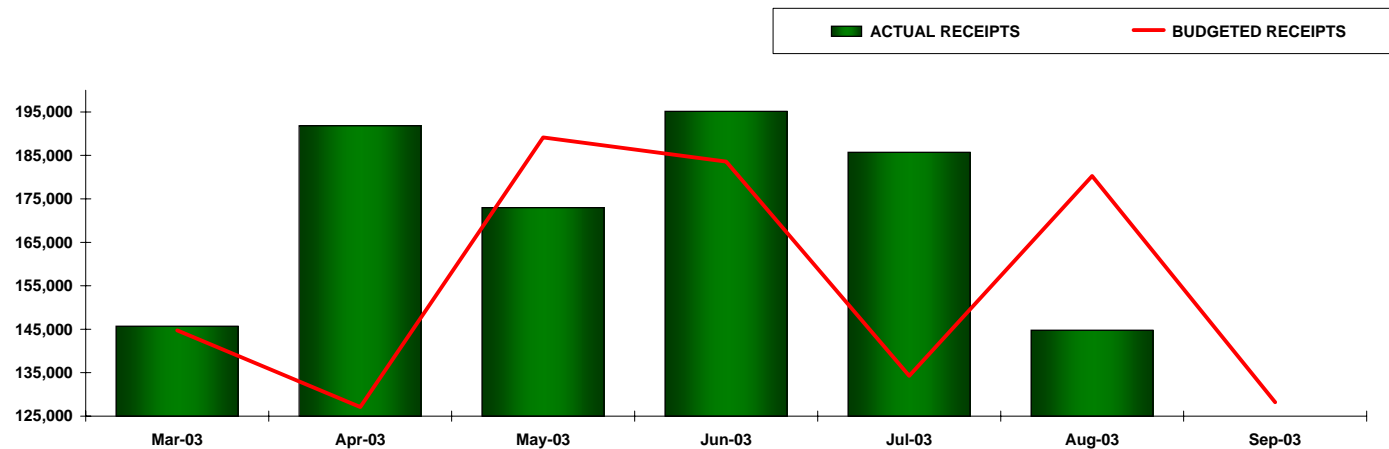
RECEIPTS BY MODALITY

January-December

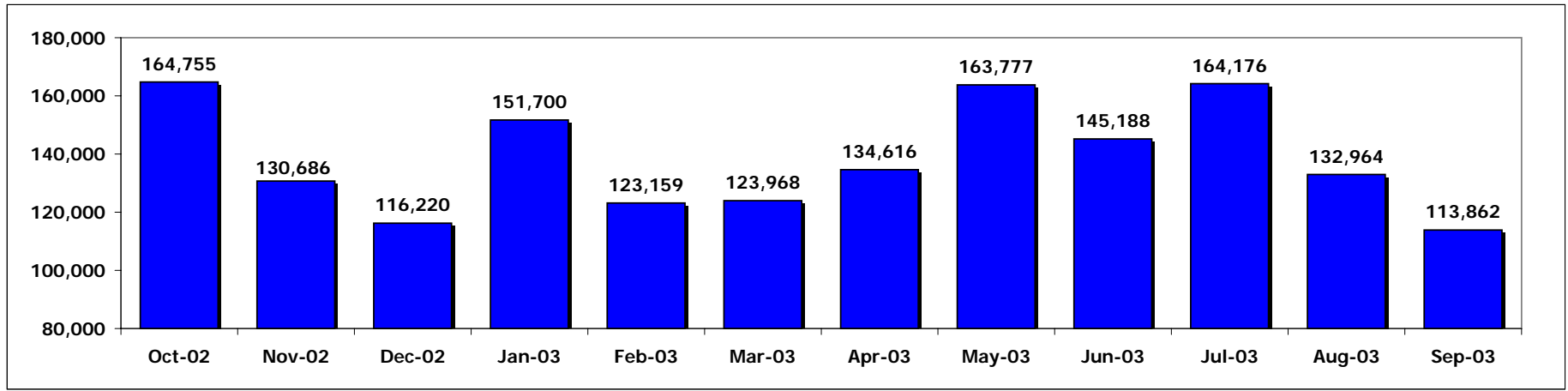
Modality Type	GROSS CHARGES	Charges as % of Grand Total Charges	NET RECEIPTS	Receipts as a % of Total Receipts	Receipts as % of Gross Charges by Modality
	3,234,229	43%	1,094,374	42%	34%
	2,277,985	30%	778,838	30%	34%
	956,828	13%	361,830	14%	38%
Sub-Total	6,469,042	86%	2,235,041	85%	35%
	210,892	3%	105,178	4%	50%
	675,409	9%	210,357	8%	31%
	48,290	1%	26,295	1%	54%
	121,332	2%	52,589	2%	43%
Grand Total	7,524,965	100%	2,629,461	100%	35%

DYNAMIC BUDGET- (1 MONTH LAG)

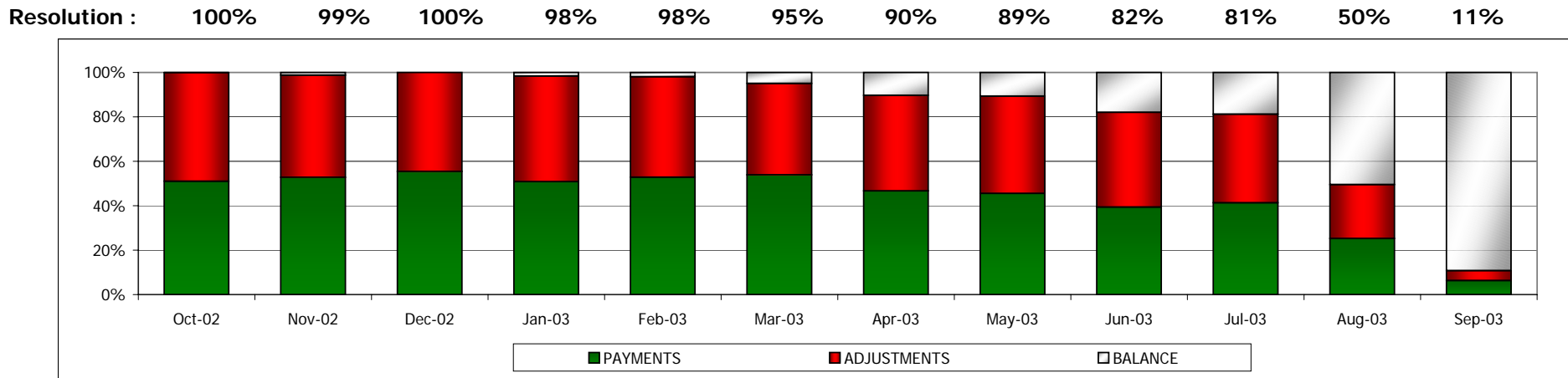
	Feb-03	Mar-03	Apr-03	May-03	Jun-03	Jul-03	6 Mo Total	Aug-03
<u>CHARGES PROCESSED</u>	400,824	341,732	512,823	496,094	356,816	495,227	2,603,516	348,226
	Mar-03	Apr-03	May-03	Jun-03	Jul-03	Aug-03	6 Mo Total	Sep-03
BUDGETED RECEIPTS	144,722 36%	127,081 37%	189,141 37%	183,579 37%	134,269 38%	180,248 36%	959,040 37%	128,212 37%
ACTUAL RECEIPTS (NET OF REFUNDS)	145,677 36%	191,820 56%	172,960 34%	195,124 39%	185,702 52%	144,757 29%	1,036,040 40%	
Variance	955	64,739	(16,181)	11,545	51,433	(35,491)	77,000	



Charges and Liquidation by Month of Service



Resolution / Cash Liquidation Ratio of Charges by Month of Service



Cash: 51% 53% 55% 51% 53% 54% 47% 46% 39% 41% 25% 6%

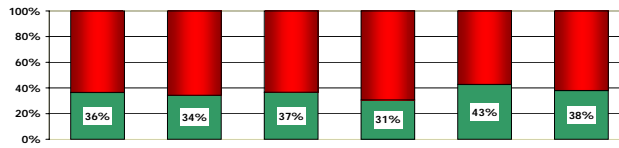
Processing Summary

Summary Processing

	Apr-03	May-03	Jun-03	Jul-03	Aug-03	Sep-03	6 Month Total
Billable Charges Processed(\$)	\$936,852	\$1,012,095	\$1,018,938	\$907,999	\$845,374	\$1,341,221	\$6,062,479
As % of All Charges	100%	100%	100%	100%	100%	100%	100%
CPT Count (#)	7,102	7,755	7,738	7,906	8,033	11,460	49,994
Average Fee (\$)	\$132	\$131	\$132	\$115	\$105	\$117	\$121

Gross Receipts	(341,108)	(337,739)	(339,755)	(344,793)	(389,615)	(305,981)	(2,058,991)
less Refunds	13,651	7,061	6,741	9,590	15,625	10,665	63,334
Net Receipts (\$)	(327,457)	(330,678)	(333,014)	(335,203)	(373,990)	(295,316)	(1,995,657)
Disallowance	(570,776)	(636,459)	(578,958)	(761,864)	(503,981)	(483,080)	(3,535,118)

(Includes: Write-offs, Risk, Withholds, HMO Disallowances, DX Non-Payable)



Other Adjustments:							
List Billable Write-Off	0	(92,943)	(39,062)	(53,793)	(26,786)	(36,066)	(248,650)
Adjustments	16,109	24,568	18,263	22,134	11,667	10,635	103,377
Insurance Only	(136)	(177)	(349)	(155)	(195)	(150)	(1,161)
Professional Courtesy	0	0	0	0	(729)	0	(729)
Bad Address Write-off	(8,666)	(5,308)	(2,215)	(8,131)	(2,424)	(11,170)	(37,913)
Collection	(27,612)	(17,642)	(23,800)	(39,863)	(24,937)	(16,898)	(150,752)
Filing Limit Write-Off Adj	(4,996)	(69,441)	(13,820)	(1,181)	(722)	(549)	(90,710)
Total	(25,301)	(160,944)	(60,982)	(80,989)	(44,125)	(54,197)	(426,538)

Dynamic Budget (\$)							
Charge 3 month Lag	1,006,546	812,798	905,416	928,048	1,006,887	1,012,892	5,672,587
Budgeted Collection %	39%	36%	36%	35%	38%	36%	37%
Budgeted Receipts	390,484	295,943	323,087	327,424	379,083	361,152	2,077,173
Actual Receipts	318,230	325,465	326,968	327,595	369,122	288,682	1,956,062
Variance	(72,254)	29,522	3,881	170	(9,961)	(72,469)	(121,111)
Actual Collection %	32%	40%	36%	35%	37%	29%	34%

Accounts Receivable (\$)							
Total A/R	2,189,365	2,194,991	2,321,222	2,093,789	2,046,419	2,654,698	
Month in A/R	2.5	2.3	2.3	2.1	2.2	2.6	
A/R > 90 days	993,238	1,046,509	1,047,770	916,267	941,557	1,010,833	
A/R >90 days	0	0	0	1	1	1	
As a % of Total A/R	45%	48%	45%	44%	46%	38%	

Source : Monthly Reports, A/R & Months in A/R (calculation) per monthly closing date

Monthly Summary - Accounts Receivable

Mar-03	Apr-03	May-03	Jun-03	Jul-03	Aug-03
--------	--------	--------	--------	--------	--------

Accounts Receivable (Hosp.+Refer.)							
Total A/R							
Current	496,559	488,715	514,050	377,512	403,853	373,883	
Prior	432,860	505,964	590,838	637,816	562,811	573,308	
Variance (\$)	63,700	(17,249)	(76,788)	(260,305)	(158,958)	(199,425)	
	<i>15%</i>	<i>(3%)</i>	<i>(13%)</i>	<i>(41%)</i>	<i>(28%)</i>	<i>(35%)</i>	
Total Months in A/R							
(Based on month-end A/R) Current	1.3	1.2	1.1	0.8	0.9	0.9	
Prior	1.0	1.1	1.2	1.3	1.2	1.3	

AR >90 Days(Service date)							
Current	86,798	87,333	84,713	69,309	69,409	67,272	
Prior	84,689	89,810	107,130	125,576	119,877	121,857	
Variance (\$)	2,109	(2,477)	(22,417)	(56,266)	(50,468)	(54,585)	
As a % of Total A/R							
Current	17%	18%	16%	18%	17%	18%	
Prior	20%	18%	18%	20%	21%	21%	

Note: Total A/R per Calendar Month

Aged Accounts Receivable > 90 Days

(by Date of Service)

As of:	04/03/03	05/02/03	06/05/03	07/07/03	08/04/03	09/05/03
MEDICARE	1,535 4%	14,310 27%	33,214 40%	40,978 43%	52,792 57%	50,871 55%
BLUE CROSS	299 1%	361 1%	912 1%	1,385 1%	1,130 1%	2,311 2%
MEDICAID	110 0%	223 0%	789 1%	879 1%	207 0%	3,146 3%
WORKERS COMP	0 0%	0 0%	47 0%	47 0%	-9 0%	0 0%
NO FAULT	0 0%	0 0%	0 0%	0 0%	0 0%	0 0%
COMMERCIAL	7,867 21%	7,482 14%	5,489 7%	9,073 9%	4,400 5%	4,317 5%
SELF PAY	13,718 36%	12,396 23%	17,362 21%	17,381 18%	11,989 13%	11,337 12%
PROMISE TO PAY	4,151 11%	5,240 10%	5,131 6%	4,966 5%	3,339 4%	3,186 3%
OTHER	0 0%	0 0%	0 0%	0 0%	0 0%	0 0%
Sub-Total	27,680	40,012	62,943	74,709	73,848	75,168
CONNECTICARE	790 2%	260 0%	1,464 2%	2,856 3%	3,198 3%	4,898 5%
CIGNA	1,376 4%	2,675 5%	5,636 7%	6,968 7%	2,050 2%	3,114 3%
HEALTHNET (PHS)	2,835 8%	5,575 10%	3,427 4%	4,431 5%	3,312 4%	2,795 3%
US HEALTHCARE	0 0%	3,010 6%	2,745 3%	815 1%	320 0%	110 0%
AETNA	855 2%	20 0%	9 0%	420 0%	1,050 1%	1,727 2%
MEDSPAN	31 0%	-29 0%	-29 0%	0 0%	265 0%	265 0%
PHCS	210 1%	129 0%	210 0%	210 0%	420 0%	420 0%
OXFORD	0 0%	210 0%	1,158 1%	2,701 3%	2,334 3%	496 1%
UNITED HEALTHCARE	0 0%	304 1%	271 0%	302 0%	1,002 1%	1,068 1%
OTHER MANAGED CARE	1,165 3%	1,199 2%	2,801 3%	492 1%	1,439 2%	940 1%
Sub-Total	7,317	13,407	17,702	19,203	15,390	15,833
PRE-COLLECTION	2,742	129	1,908	2,145	3,012	1,678
TOTAL AR > 90 days	37,738	53,549	82,552	96,057	92,249	92,679
<i>As a percentage of</i>	7%	10%	14%	16%	14%	14%
Total A/R	567,449	540,226	605,304	603,878	642,781	672,132